



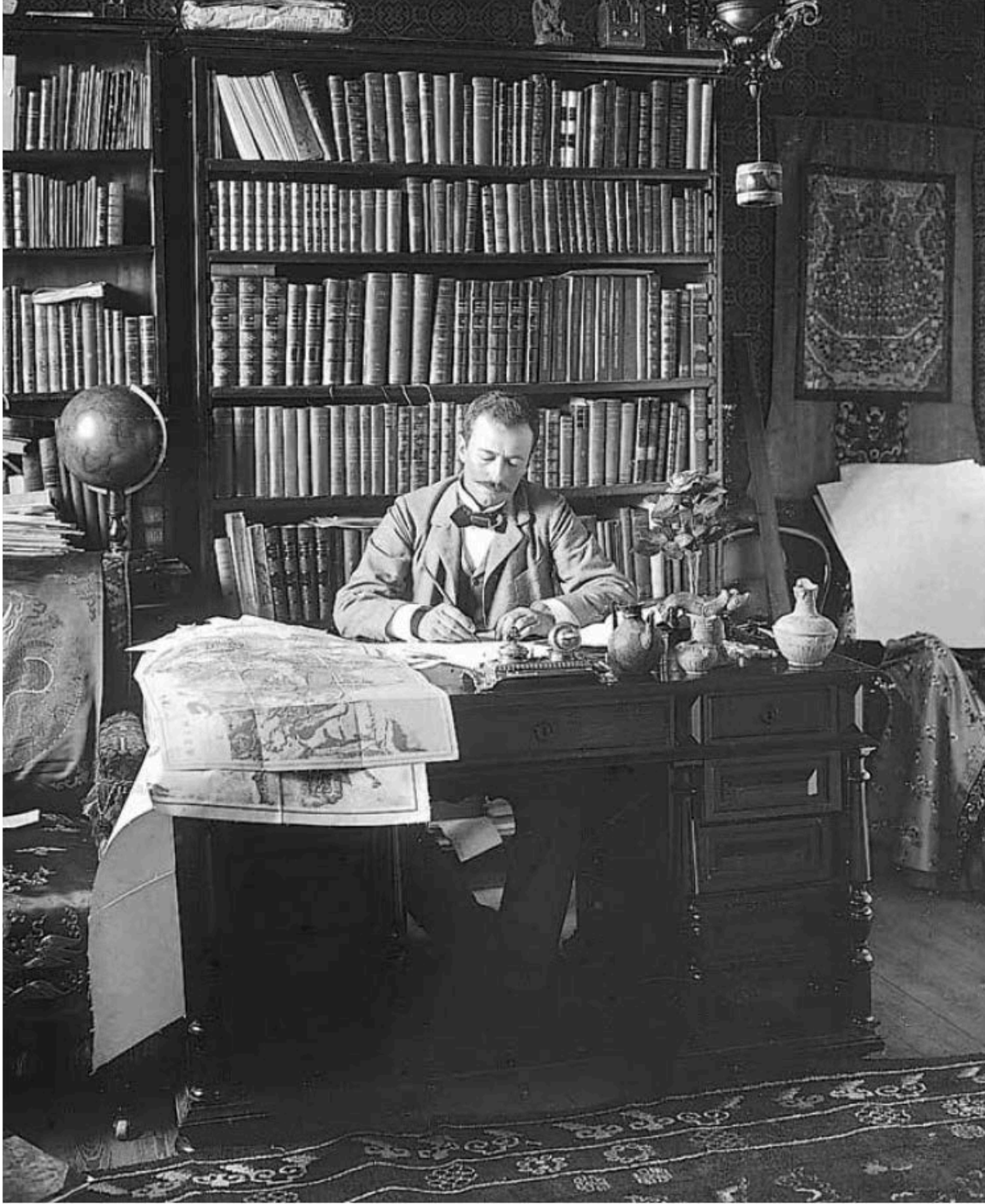
Slide 00

## PHOTOGRAPHY & GENIUS LOCI

HOL LARS [LEWIS] LARSSON'S AUGUSTA

VICTORIA STIFTUNG ON OLIVET, 1914

RACHEL LEV // NÅS, JULY 1, 2024



SVEN A. HEDIN  
IN THIS STUDY,  
STOCKHOLM

SLIDE # 01



KAISER WILLHELM II  
OF GERMANY AND  
KING OF PRUSSIA

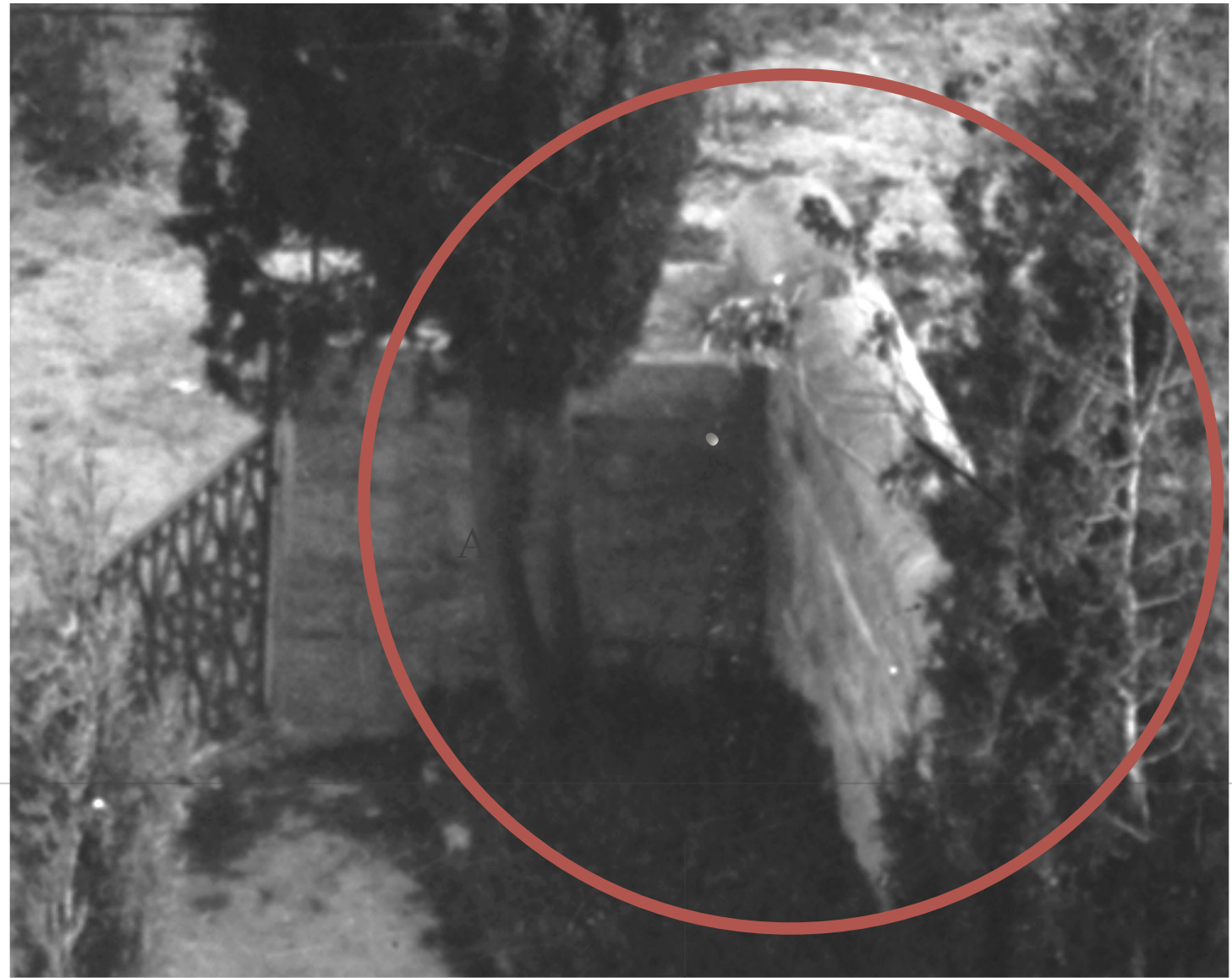
SLIDE # 03





*It is probable that because of these efforts, part of the historical the character of the city and the landscape will be lost, which is, of course, regrettable but also inevitable – for why a city of such international importance as Jerusalem should not be permitted to participate in the achievements of a culture of our day and age.*





FELLAH  
SLIDE #7







AUGUSTA  
VICTORIA  
STIFTUNG ON  
OLIVET, 1914

SLIDE # 09



SLIDE # 10

AUGUSTA VICTORIA, AERIAL PHOTOGRAPH



AUGUSTA VICTORIA AERIAL PHOTOGRAPH

SLIDE # 11





CHARLES R. ASHBEE

SLIDE #13



*Charles R. Ashbee design proposals for Jerusalem*

*Based on American Colony Photographs 1918–1922*

**SLIDE # 14**

*“Coming into the City from the old pilgrim route, we notice how ancient Jerusalem is all but obliterated: we see the once golden dome no longer, a bastard Florence, a bastard Nuremberg, a bastard Moscow, an imitation Lourdes, a Bavarian suburb, and an imitation Oxford . . . Round and about the City circuit, within or without the walls, we note an arrogant assertion of the various national codes. All modern buildings have been strangely prophetic of the War.”*

*–Charles R. Ashbee*





THE SURRENDER  
OF JERUSALEM  
TO THE BRITISH  
DECEMBER 17, 1917

SLIDE # 16

